



ROSEMARY'S
COURTYARD



GUIDE PRICE £460,000 - £500,000

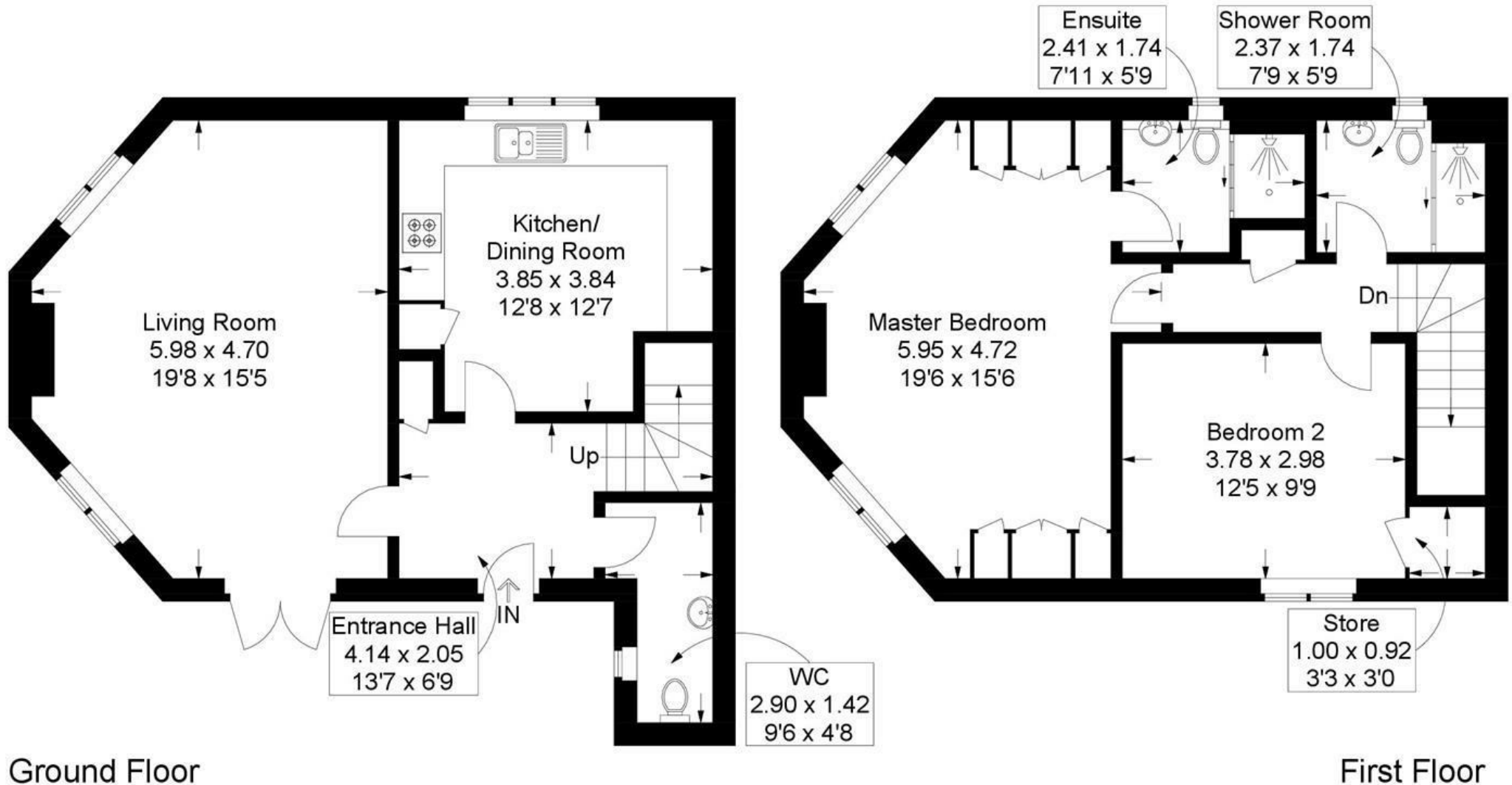
Beautiful 2-bed semi-detached home in gated Midhurst development with parking. Bright 19ft living room with fireplace and French doors, modern kitchen, 2 baths, vaulted master with en-suite (option for 3rd bed). Low-maintenance garden with pergola. Central, stylish, and secure.

- Two Bedrooms
- Town Centre Location
- Allocated Parking
- Two Bathrooms (one en-suite)
- Gated Development
- 19ft Master Bedroom
- 19ft Living Room
- Courtyard Garden
- Individual Design
- No Forward Chain!



Rosemary's Courtyard, Lamberts Lane, Midhurst

Approximate Gross Internal Area = 103.1 sq m / 1110 sq ft



Ground Floor

First Floor

This plan is for layout guidance only. Not drawn to scale unless stated. Windows and door openings are approximate. Whilst every care is taken in the preparation of this plan, please check all dimensions, shapes and compass bearings before making any decisions reliant upon them.